



The Glenview Art League Newsletter

“Advancing the study and development of fine art in our community”

NOVEMBER 2018

President’s Corner



Ready or not, the seasons are changing. We’re scraping occasional frost off our windshields. The light, low and golden now, is filtering through leaves that will soon turn, and then fall. It’s a good time to reflect. What has our creative work been like this year? Have we felt supported? Inspired? Challenged?

It’s also time to renew our membership to the Glenview Art League. Membership forms are enclosed with this newsletter, and are also available at www.glenviewartleague.org.

Please fill out and return the membership form, and invite artists and art lovers to join. The camaraderie and support of a community of artists is so important, as art is sometimes a solitary pursuit. The energy of the GAL relies on the involvement of its members. Have you found opportunities to share your passion and expertise? Are we finding audiences for our work, and is our art addressing the needs of our neighbors and our world?

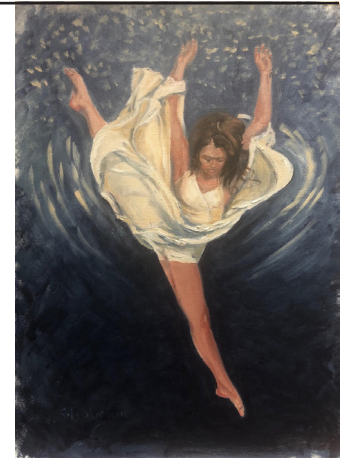
Together we strive to “advance the study and development of fine art in our community.” How would you like to see the league grow in the coming year? How can we more fully support our artists and serve our community?

As I take on the role of president of the GAL board, I’m grateful for the commitment, energy and wisdom many people are pouring into this vibrant group, and for the chance to continue to learn from and work with many of you in this new position.

Find out more about our exhibit program, art demos, upcoming potluck and more in these pages. We want to hear from you—watch your email for a short online survey that will guide the GAL board and the direction of the league. All members are welcome at board meetings (November 19 is the next one).

Save the dates for our upcoming events, and consider new ways to get involved.

Keep up the creative work!
Deb Anderson



Oil paintings on canvas of the Trifecta Dance Collective by Sandy Sheagren, left 14 by 18 inches, right 18 by 24 inches. See “Member News on page 3 for upcoming exhibition details.

SAVE THE DATES - UPCOMING EVENTS

- Tues., Nov. 6, 7 p.m. GAL Demo Artist is Pamela Martinez, Intro to Suminagashi Paper Marbling
- Thurs., Nov. 15 Exhibit Forms Due!
- Mon., Nov. 19, 7 p.m. GAL’s Board Meeting December 2018 No Demo Meeting!
- Fri., Dec. 7, 5:30 p.m. Member Potluck / Art Share January 2019 No Demo Meeting!
- Tues., Feb. 5, 2019, 7 p.m. Demo by Kristin Hauss, Watercolor Artist
- Saturday, Feb. 23, 2019 2019 Youth Art Fair
- July 29/30, 2019 GAL’s 66th Annual Summer Art Fair

THE GLENVIEW ART LEAGUE BOARD

OFFICERS

President: Deb Anderson
 Vice President: Sandy Sheagren
 Secretary: Marilyn Perry
 Treasurer: Tom Pope
 Social Media: Amy Taylor
 Admin/Editor/Website: Kathie Green

DIRECTORS

Mimi Branstrom
 Lee Colpi
 Maureen Hanlon
 Bob Leopold
 Gloria Moschel
 Bud Sends



Artist Pamela Martinez with her Suminagashi artwork.

The GAL will host a Suminagashi demonstration by Pamela Martinez

The GAL DEMO ARTIST for Tuesday, Nov. 6

Pamela Martinez has been teaching, studying and practicing Suminagashi, for over ten years. She is a member of the Sumi-E Society and provides Suminagashi instruction at the Botanic Garden in Glencoe, Workshops for the Sumi-E Society, Gilda's Club and as well as individual lessons. She believes the spiritual practice of Suminagashi teaches the importance of self-expression, provides the mystery of an undetermined result and includes the use of various techniques to challenge the imagination.

What is Suminagashi? Suminagashi translated means floating black ink. It is the ancient meditative Japanese practice of gently floating pigments on the surface of water with a brush and then capturing the mono print image on an absorbent paper. Learn historical background and be introduced to the time honored technique and artistic possibilities.

The GAL's monthly art demonstrations are held at the Glenview Park Center, 2400 Chestnut Avenue, 7-9 p.m.

This event is ADA accessible.

The GAL Exhibit Program – going strong into the new year

Local businesses host rotating exhibits of our members' artwork throughout the year. Gloria Moschel, a longstanding board member, has lovingly managed the program for the last seven years. As a direct result of her hard work, it has thrived and grown exponentially. Thank you Gloria for all your hard work! Gloria is now stepping down as Gallery Manager so if you think this volunteer position sounds interesting, let us know.

In 2018, the Glenview Art League's Exhibit Program had twenty-four artists. The current venues include The Abington of Glenview (new in 2018), Arden Court, The Book Market, C & M Auto, Colonial Dental, Edward R. James, Journey Care, Lynch McPeck Wealth Management (new in 2018), and Tarantur & Company.

Each venue has a GAL volunteer as Gallery Manager, who coordinates the installations/removal of art artwork. Most exhibits rotate quarterly.

You will find an Exhibitor Application Form enclosed in your packet, as well as a Venue List. If you are interested in this unique opportunity to exhibit your artwork, please fill out the form and give us an idea of where you would like to exhibit and in what

quarter. Please send the form to us no later than November 15. The yearly schedule is then planned by a committee the week of November 15. You will receive the 2019 schedule and instructions in mid-December.

If this is the first time you are exhibiting, please send us three (3) 4 by 6 inch color photos of your recent work. On each of those pictures, please write your name, the title of the artwork, medium used, size of framed image and the price you wish to sell it for. NOTE! Photos will not be returned, they will be kept in a permanent file in our office. As you fill out the Exhibitor Program Application, you will need to list each piece of art work on the form as well. Of course, if this is not your first rodeo, you do not need to send in photos but must fill out the form.

The Exhibit Venue List explains the requirements of each venue, as well as different changeover dates and times, so read carefully before noting venue preference.

As mentioned above, the Exhibit Program Manager position is currently open, as well as a Gallery Manager position for JourneyCare. Contact Kathie Green at glenviewartleague@att.net if interested.

Join us for Potluck and Art Share

December 7, 5:30 p.m. at the Glenview Public Library

The Annual GAL Potluck and Art Share is scheduled for Friday, December 7 at the Glenview Public Library, 1930 Glenview Road.

GAL will supply plates, napkins, silverware, cups, as well as coffee (decaf and regular), tea, water (bottled), and soft drinks. Plan on arriving at between 5:30 and 5:45 p.m. if you are bringing a dish to pass. Last year, we had a lovely spread of many different exotic salads and numerous desserts. Honestly that may sound funny but it was very tasty. We will start planning this in the next newsletter.

As always, please bring ONE piece of Art Work to discuss. You can ask for input if you would like or just explain what you created and the meaning behind why you created it. Whatever you would like to do. We will supply some easels for paintings, etc.

"The arts give a voice to the voiceless. The arts help transform American communities and, as I often say, the result can be a better child, a better town, a better nation and certainly a better world."

~ ROBERT L. LYNCH, *President, Americans for the Arts*

Renewing membership in the GAL

The 2019 Membership Form enclosed and available at our website. To accommodate rising postage and Internet costs our fees are now \$35 per person, \$45 per family and \$15 per person for students. Please fill out your form and mail it to: Glenview Art League (GAL) 1920 Waukegan Road, Suite 204, Glenview, IL 60025 by December 31, 2018.

MEMBER NEWS

Audrey McCartney Barrett has a cityscape in the 30th Anniversary of CAVA at Gallery 1070 located at 1070 W. Granville in Chicago Oct. 22- Nov. 18.

Istvan (Steve) Gal is exhibiting (as part of the GAL Exhibitor Program) Lynch McPeck Wealth Management, 2700 Patriot Drive, 4th Floor with six paintings. He currently has two oil paintings at the Skokie Library, as part of the Skokie Art Guild Exhibition. Lastly he has 13 paintings at the Devonshire Cultural Center in Skokie.

Susan Mart is exhibiting at Chimera Loft in Evanston, from December 6-January 27. She will also be in a show at the David Adler Arts Center in Libertyville November 2-December 14.

Steve Johnson is currently in the Fall Exhibit at the Skokie Public Library, 5215 Oakton Street, Skokie from October 6-November 16. He is involved in the 2018 Independent Artist Showcase at the Wilmette Park District Community Rec. Center, 3000 Glenview Road, Wilmette; November 7-December 18. Lastly, he will be in the North Shore Art League's "Inchworks" Show, at the Winnetka Community House, 620 Lincoln Avenue, Winnetka; November 15-January, 2019.

Charlotte Kaplan is exhibiting six (6) large pieces of her fiber art at Edward R. James (Entrance Hall) 2550 Waukegan, Glenview from September 20th through January 4, 2019.

Les Scott will be involved in the Lake County Art League's "Winter Show and Critique" held on November 10 at 7 p.m. (on Sheridan Road in Waukegan). There will be 41 paintings on exhibit. Admission is free and open to the public. Les will also have two paintings in the Annual "Juried" Winter Show held at the Anderson Arts Center, located on 3rd Ave, in Kenosha, Wisconsin

from November 11-January 5. This is an annual show and the reception is scheduled from 1:30 p.m. to 4 p.m. on November 11.

Sandy Sheagren is exhibiting her paintings of the Trifecta Dance Collective at their "Performance Community Celebration Fundraiser", scheduled for Friday, November 9th at the Glen Club located at 2901 West Lake Avenue, Glenview, IL 60026 4 p.m. to 10 pm. Sandy is also exhibiting at the North Suburban, YMCA (2705 Techny, Northbrook) during the Month of November. The Community Gala Event is on scheduled for November 9, from 7 p.m. to 9 p.m.

Kay Thomas artwork was published in the 2018-2019 Edition of *East on Central*, a Journal of Arts from Highland Park. She will be exhibiting two paintings at the North Shore YMCA in Northbrook from November 10-December 30 with a Gala Opening scheduled for November 10 from 7 p.m. to 9 p.m. Lastly, Kay will be showing three paintings at the Wilmette Park District Community Recreation Center from November 7-December 18.

Kittie Yohe is participating in the 2018 Northbrook Artist Tour on Saturday, November 3 from 12 p.m. - 4 p.m. This event is free and open to the public. Poster will be emailed separately!

ART SUPPLIES

Wood frames, french easel: Janet Shen has **wood frames** for sale, they were used only once for an exhibit and measure at 17" by 21". They are a simple design, with a 1/2" border. She has seven in Grey, five in Black and two in White for sale for \$5 each. She also has a brand new **Julian French easel** for \$110. You may email her at oreganoj4@netzero.com.